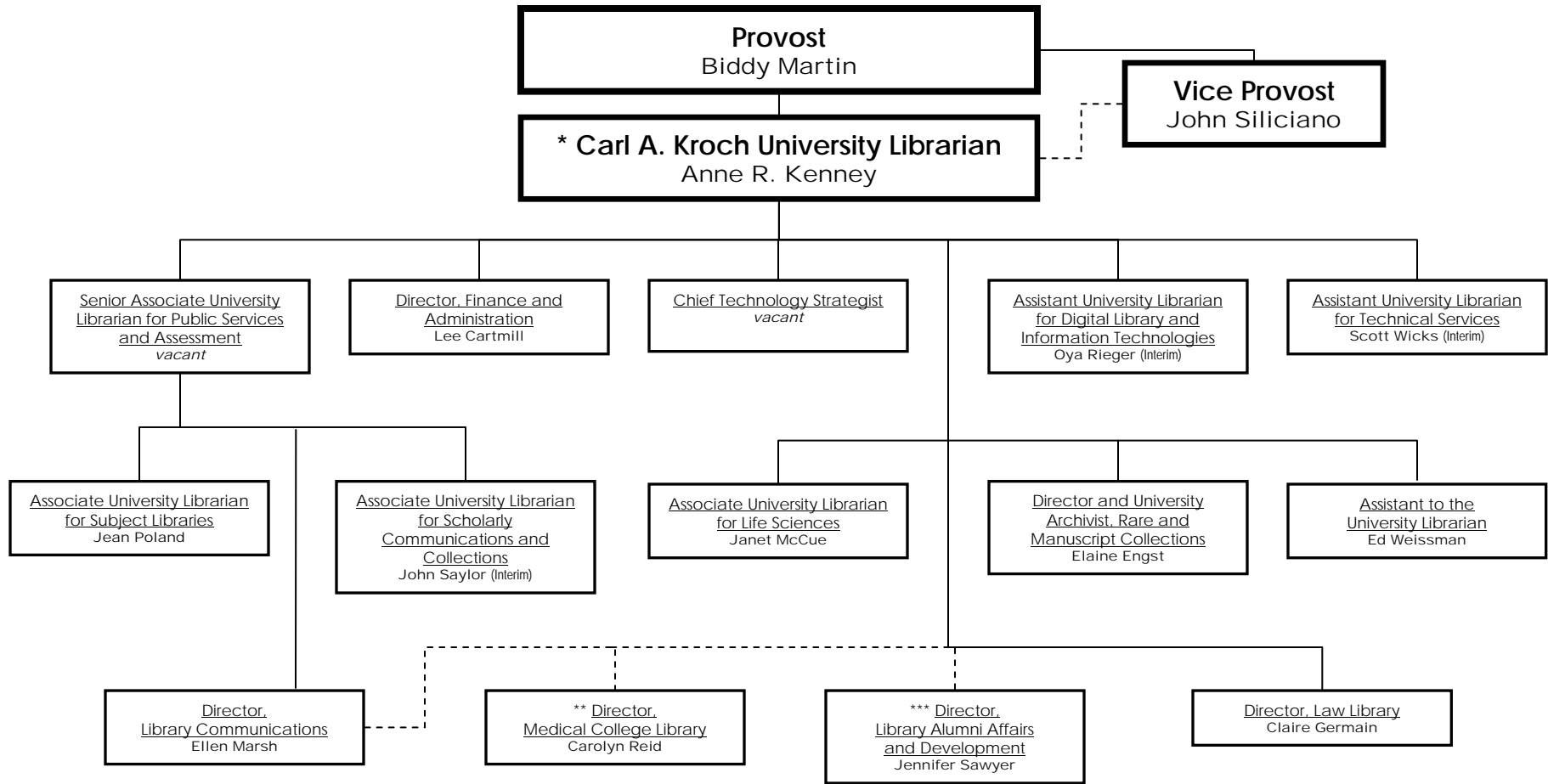


CORNELL UNIVERSITY LIBRARY



Internal Advisors

- Library Management Team
- Administrative Team
- Council of Librarians

External Advisors

- Library Advisory Council
- Student Library Advisory Council
- University Faculty Library Board

* Direct report to the Provost, day to day interactions with the Vice Provost

** Direct report to the Chief Information Officer, Weill Cornell Medical College

*** Direct report to the Head of Colleges and Units, Alumni Affairs and Development